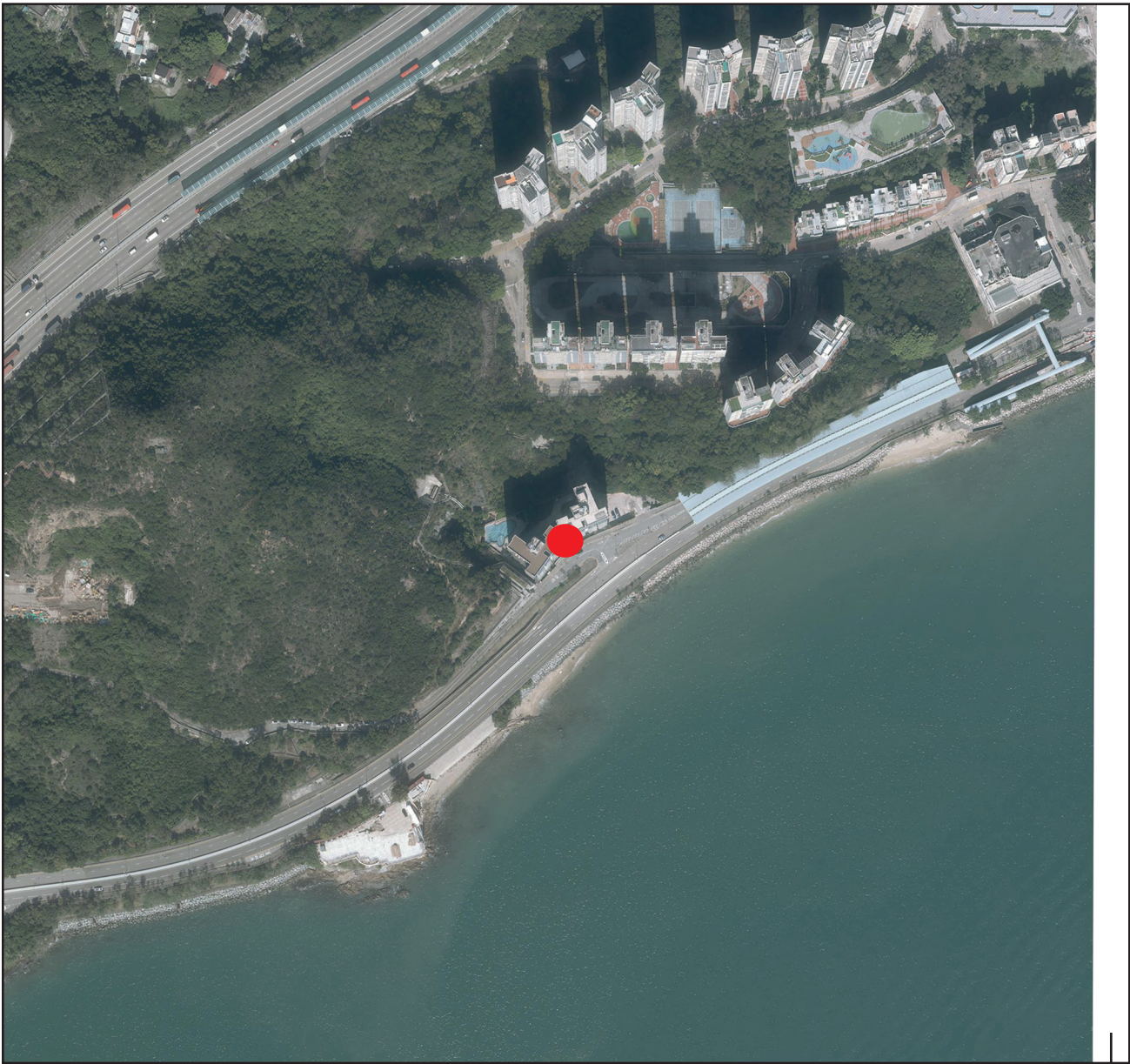


# AERIAL PHOTOGRAPH OF THE DEVELOPMENT

## 發展項目的鳥瞰照片

Adopted from part of the aerial photograph taken by the Survey and Mapping Office of the Lands Department at a flying height of 6,900 feet, Photo No. E176114C dated 19 December 2022.  
摘錄自地政總署測繪處在6,900呎的飛行高度拍攝之鳥瞰照片，照片編號E176114C，日期為2022年12月19日。

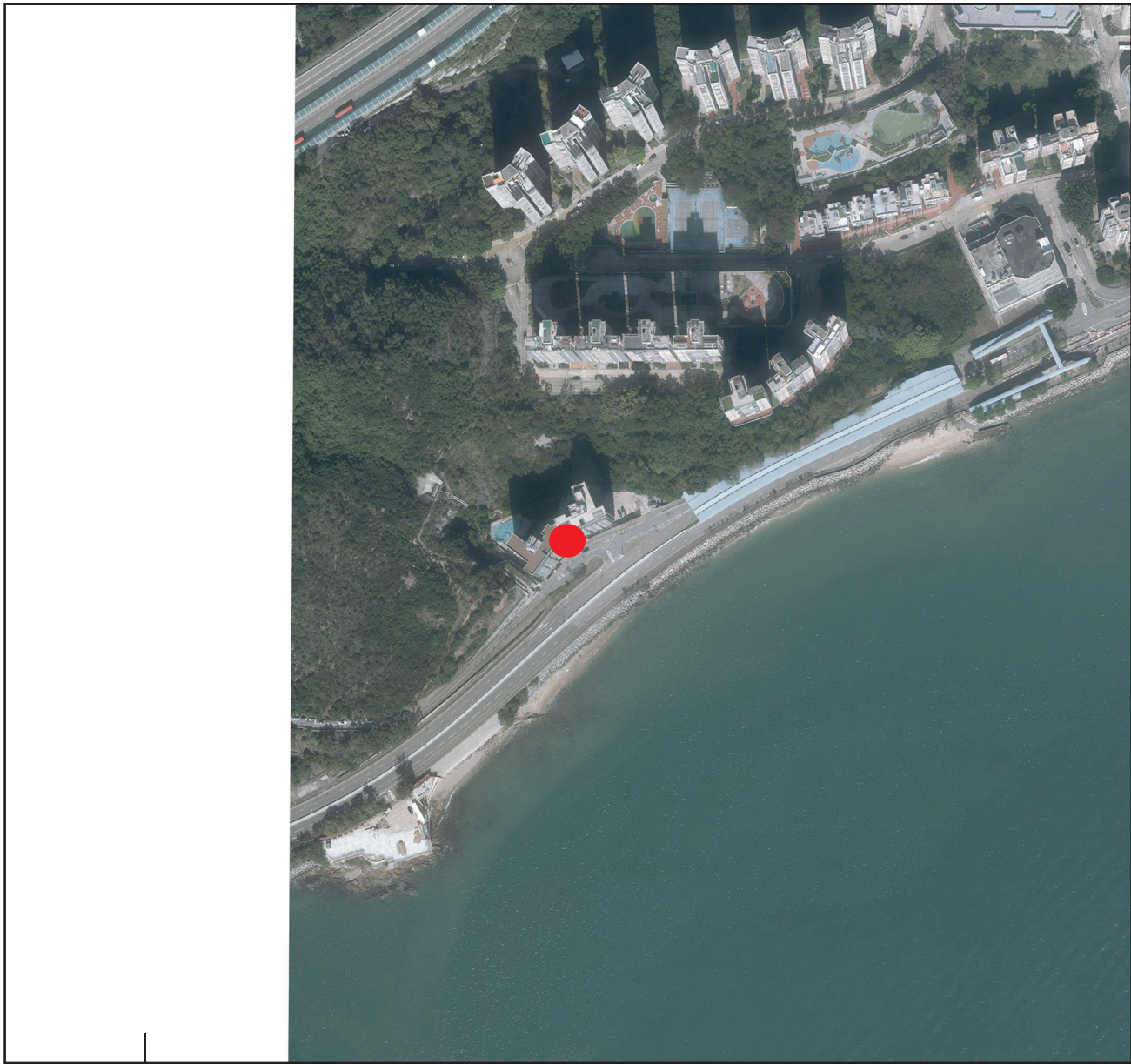


● Location of the Development  
發展項目的位置

This blank area falls outside the coverage of the aerial photograph.  
此空白範圍不為本鳥瞰照片所覆蓋。

Survey and Mapping Office, Lands Department, The Government of HKSAR © Copyright reserved – reproduction by permission only.  
香港特別行政區政府地政總署測繪處 版權所有，未經許可，不得複製。

Adopted from part of the aerial photograph taken by the Survey and Mapping Office of the Lands Department at a flying height of 6,900 feet, Photo No. E176115C dated 19 December 2022.  
摘錄自地政總署測繪處在6,900呎的飛行高度拍攝之鳥瞰照片，照片編號E176115C，日期為2022年12月19日。



This blank area falls outside the coverage of the aerial photograph.  
此空白範圍不為本鳥瞰照片所覆蓋。

- Notes:
1. The copies of the aerial photographs of the Development are available for free inspection at the sales office during opening hours.
  2. The aerial photographs may show more than the area required under the Residential Properties (First-hand Sales) Ordinance due to technical reason that the boundary of the Development is irregular.
- 附註：
1. 發展項目的鳥瞰照片之副本可於售樓處開放時間內免費查閱。
  2. 由於發展項目的邊界不規則的技術原因，此鳥瞰照片所顯示的範圍可能超過《一手住宅物業銷售條例》所規定的範圍。